



British Television on DVD

Classics



David Copperfield (Masterpiece Theatre): David Copperfield lives a nearly idyllic existence with his mother Clara and housekeeper, but his life is forever changed when his mother re-marries.

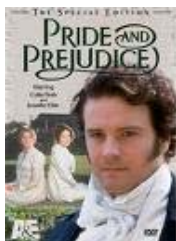
Ivanhoe (Adaptation) : Based on the novel by Sir Walter Scott, the young Saxon knight Ivanhoe, returning from the Crusades to a chaotic England ruled by the enemies of the absent King Richard the Lion-Hearted and finds himself disowned and dishonoured, forced to fight for

his name and the people he loves.

Jane Eyre (Masterpiece Theatre): A gothic tale, written by Charlotte Bronte, *Jane Eyre* tells the story of a small, plain-faced, intelligent and honest English orphan. Jane's early life is filled with much suffering at the hands of her aunt and cousins and at the Lowood Shool. She is later hired as the governess of Thornfield Manor, where she falls in love with her employer, Edward Rochester.

Life and Adventures of Nicholas Nickleby : Filmed in 1982, this Tony award winning production of Charles Dickens classic Nicholas Nickleby clocks in with an intimidating running time of nine hours, though it is considered to be one of the best adaptations of the original novel.

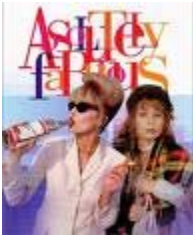
Middlemarch (Masterpiece Theatre): Based on the novel by George Eliot, *Middlemarch* is set in the fictitious Midlands town of Middlemarch during the period 1830–32. It has a multiple plot and pursues a number of underlying themes and issues of the day, such as the status of women, the nature of marriage, idealism and self-interest, religion and hypocrisy, political reform, and education.



Pride & Prejudice (BBC adaptation Jane Austen) : Set in England in the early 1800s, Jane Austen's *Pride and Prejudice* tells the story of Mr and Mrs Bennet's five unmarried daughters after the rich and eligible Mr Bingley and his status-conscious friend, Mr Darcy, have moved into their neighbourhood.

Sense & Sensibility (BBC adaptation Jane Austen) : Andrew Davies' classic BBC production of Jane Austen's celebrated and most romantic novel of two devoted sisters.

Comedy



Absolutely Fabulous : Edina Monsoon and Patsy Stone are two immature, chain-smoking, alcoholic, prosperous but preposterous substance-abusing fashion and fad-obsessed Londoners who value fame and style over substance.

Best of Benny Hill : The *Benny Hill Show* is a British Comedy television show starring Benny Hill and numerous comedy character actors.

Beyond the Fringe (Festival) : Beyond the Fringe was a British comedy stage revue written and performed by Peter Cook, Dudley Moore, Alan Bennett, and Jonathan Miller. It played in Britain's West End and on New York's Broadway in the early 1960s, and is widely regarded as seminal to the rise of satire in 1960s Britain.

Big Train : Following in the tradition of Monty Python, the comedy of *Big Train* is based on the subversion of ordinary situations by the surreal or macabre.

Bit of Fry and Laurie : This TV series starring former Cambridge Footlights members Stephen Fry and Hugh Laurie, aired between 1989 and 1995. The programme was a sketch show cast in a rather eccentric and at times high-brow mould.

Clatterford: From *Absolutely Fabulous'* Jennifer Saunders, *Clatterford* is a comedy about a woman who joins the neighborhood women's guild she had heretofore avoided following the sudden death of her husband and the subsequent loss of her job as the local nurse.



Creature Comforts : In the same vein as the "man on the street" interviews, this show has various animals in a zoo being interviewed about their living conditions.

Fawlty Towers : The series focuses on the exploits and misadventures of short-fused hotelier Basil Fawlty, his wife Sybil, and their employees, porter and waiter Manuel, maid

Polly, and chef Terry.

Grand : *Grand* is a comedy of manners, satirizing three social classes in rural Pennsylvania. It is set in a high-class Manchester hotel in the nineteen-twenties.

Little Britain : This award winning character-based comedy sketch first appeared on BBC radio and then television. The show comprises sketches involving exaggerated parodies of British people from all walks of life in various situations familiar to the British.

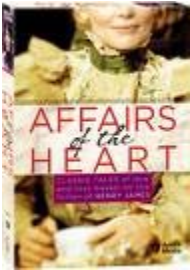
Mile High : *Mile High* is a mix of fast-paced drama, sex and comedy. The show is based around the flight crew of a young budget airline (Fresh!), and follows them as they travel around the world and their lives in the London home they share.

Monty Python's Flying Circus : *Monty Python's Flying Circus* is a BBC sketch comedy programme from the Monty Python comedy team, and the group's initial claim to fame. The show was noted for its surrealism, risqué or innuendo-laden humour, sight gags, and sketches without punch lines.

The Office : Created, written, and directed by Ricky Gervais and Stephen Merchant, the programme is about day-to-day lives of office employees in the Slough, Berkshire branch of the fictitious Wernham Hogg Paper Company. Although fictional and scripted, the programme takes the form of a fictional documentary, with the presence of the camera often acknowledged.

Student Prince (Masterpiece Theatre) : *Student Prince* is a romantic comedy about a policeman detailed to guard a royal prince at university. When Barry Grimes is offered a promotion in the Metropolitan Police he does not expect to be seconded to the Royal Protection Squad.

Drama



Affairs of the Heart : A 1974 UK anthology of dramas based on stories by Henry James and features all star casts and lavish productions. These seven dramas highlight the classic emotions of love and loss in the Victorian Era.

Amazing Mrs. Pritchard (multiple volumes) : The *Amazing Mrs. Pritchard* is a British drama series starring Jane Horrocks in the title role of a woman with no previous political experience who eventually is elected MP and later becomes Prime Minister of the United Kingdom.

Barchester Chronicles: The cozy community of Barchester is rocked from its complacency when a crusade against the Church of England's practice of self-enrichment misfires, Overnight, Septimus Harding becomes the pawn in a political battle begun by his younger daughter's beau.

Berkeley Square : Three young girls come together as nannies in turn-of-the-century London and become lifelong friends.

Catherine Cookson collection : With evocative settings in Cookson's northeast England, eras from the mid-1800s to World War I come alive in these four powerful dramas that portray the harshness of the English class system and the redemptive power of love.

Clarissa: Based on the 18th century novel by Samuel Richardson, this lavish BBC production will appeal to anyone who loves a sexy psychological thriller. Features include outtakes, screen tests, Samuel Richardson profile, and much more.

Clinic : The drama centres on the staff of the Clarence Street Clinic in the affluent Dublin 4 area of Dublin and is a multi-disciplinary health centre which allows for an equally diverse cast.

Cold Feet : The storyline follows three Manchester couples at different stages of settling down become entangled in love and friendship. As poignantly true to life as it is hilarious, *Cold Feet* has been hailed for its superb scripts, inspired editing, and trend-setting use of fantasy and flashbacks.

Colonial House: *Colonial House* was a short-run television series intending to recreate daily life in Plymouth Colony in 1628. It showed the challenges colonists faced in the early seventeenth century and was filmed near Machias, Maine.

Country Matters : (based on the stories of A.E. Coppard and H.E. Bates, Masterpiece Theatre production) : Set in post-WW1 England it depicts the grittiness and limited opportunities of rural life and as well as the tragic situations the inhabitants cope with.

Darling Buds of May : The *Darling Buds of May* is set in rural 1950s Kent, among a large, boisterous family consisting of Pop Larkin, Ma Larkin, who were unmarried, their eldest daughter Mariette, and tax-collector Cedric Charlton, who is re-christened Charley by the Larkins when he becomes enamoured with the idyllic country life.

Doc Martin : Martin Clunes stars as Doctor Martin Ellingham whose once brilliant surgical career is derailed when he suddenly develops a phobia. He decides to retrain and become a general practitioner and work in the small Cornish community of Portwenn.



Doctor Who : *Doctor Who* is a science fiction program, which depicts the adventures of a mysterious alien time-traveller known as "the Doctor" who travels in his space and time-ship, the TARDIS. With various companions, he explores time and space, solving problems, facing monsters and righting wrongs.

Duchess of Duke Street : This series is set in London and is loosely based on the real-life career of Rosa Lewis, the "Duchess of Jermyn Street", who ran the Cavendish Hotel in London, between 1900 and 1925.

Edwardians: A series of plays set during the reign of Edward VII, between 1901 and 1910 focusing on its most famous protagonists.

Elizabeth I : the virgin queen (Masterpiece Theatre) : This is a four-part miniseries based upon the life of Queen Elizabeth I, starring Anne-Marie Duff. It takes a close look on Elizabeth's private life; the emotional effect of her mother's execution as well as Elizabeth's relationship with Robert Dudley, 1st Earl of Leicester and.

First Churchills (Masterpiece Theatre) : This mini-series explores the elaborate politics of seventeenth-century England, describing the mercenary John Churchill's meeting and later marriage to Sarah, the daughter of the Duke of York, his momentous victory at the battle of Blenheim in 1704, his elevation to the nobility, the costly construction of his magnificent palace, and his final humiliating fall from favour.

Forsyte Saga : The *Forsyte Saga* chronicles the changes of the leading members of an upper-middle-class British family. Only a few generations removed from their farmer ancestors, the family members feel a strong awareness of their new money status.

Good Neighbors : (Also known as "The Good Life") Reaching his 40th birthday, Tom Good realizes that he is no longer satisfied with his job. His home is paid for and he and his wife decide to live a simple and sustainable life.

Goodnight Mister Tom (Masterpiece Theatre) : Set in an English village around in WW2, "Mr. Tom" Oakley still broods over the death of his wife and small son while he

was away in the navy during the First World War, and grief has made him a surly hermit. Under great duress; Mr. Tom takes in a painfully quiet 10-year-old during the bombings in London, and discovers the child has many psychological and physical scars.

Grand: At the end of World War I, the Bannerman family re-opens the Grand Hotel after a lengthy closure and a costly re-furbishing.

Horatio Hornblower : *Horatio Hornblower* is a series based on C. S. Forester's novels about the fictional character Horatio Hornblower, a Royal Naval officer during the French Revolutionary Wars and the Napoleonic Wars.

House of Eliott : From the creators of *Upstairs, Downstairs* comes an addictive drama series set in the era of flappers and suffragettes. Louise Lombard (*Hidalgo, CSI*) and Stella Gonet (*Nicholas Nickleby*) star as Evangeline and Beatrice Eliott, sisters born into wealth and privilege who must support themselves after their profligate father dies and leaves them penniless.

Hustle: First broadcast in 2004, the series follows a group of con artists who specialise in "long cons" – extended deceptions which require greater commitment, but which return a higher reward than simple confidence tricks.

League of Gentlemen : This sketch-based program takes place in the fictional village of Royston Vasey, set somewhere in the north of England. The series follows the lives of dozens of the town's bizarre inhabitants, played by cast of three people actors dressed in a number of different guises.

Lillie : Adapted from the book "The Prince and the Lily" by James Brough, Lillie follows the life of Lillie Langtry from her youth, growing up on the provincial channel island of Jersey, through her meteoric rise in both the artistic and high society circles of Victorian London.

Little Dorritt: The story of Amy Dorrit, who spends her days earning money for the family and looking after her proud father, who is a long-term inmate of Marshalsea debtors' prison in London.



Longitude : In the 18th century, the only way to navigate at sea was to follow a coastline all the way as longitude required a clock that would keep time accurately at sea, and such a device did not exist. The British Parliament set up an enormous prize to track longitude at sea in response to the loss of life from navigational errors. Craftsman John Harrison, the main protagonist in this story, built a clock that would do the job.

Lost Empires : A seven-part, eight-hour adaptation of J.B. Priestly's novel about the world of the English music hall before World War I. The story centers on a young man's journey from innocence as he becomes involved in a traveling vaudeville company.

Monarch of the Glen : Inspired by the highland novels of Compton Mackenzie, this show follows Archie MacDonald as he finds himself thrown into the role of the new Laird of Glenbogle, his family's financially failing Scottish estate.

Nine Tailors (Masterpiece Theatre) : In this adaptation of Dorothy L. Sayers's intricate, nostalgic, and atmospheric novel of the same name, Lord Peter Wimsey, stranded in a

New-Year's Eve snowstorm ca. 1930 in the fens of eastern England, becomes the guest of a local clergyman.

Onedin Line : The *Onedin Line* was a popular BBC television drama series that ran from 1971 to 1980. The series is set in Liverpool in the mid-19th century and deals with the rise of a shipping line, the Onedin Line, named after its owner James Onedin.

Pallisers : This epic length dramatization of six of Anthony Trollope's great novels-often called the best sequence of fiction based on British Parliamentary life-is one of the crown jewels of the Golden Age British period drama. The story follows the fortunes of the youthful Glencora and Plantagenet from the marriage that was forced on them through the joys and heartbreaks of both their personal and public lives over the years.

Primeval : An evolutionary zoologist discovers prehistoric creatures alive and well in the present day. Unexplained anomalies are ripping holes in the fabric of time, allowing dinosaurs to escape the past and roam the modern world.

Robin Hood: Based on the traditional stories of legendary English folk hero.

State of Play : *State of Play* is a 6-part British television drama that tells the story of a newspaper's investigation into the death of a young woman, and centres on the relationship between the leading journalist and his old friend, a Member of Parliament and the woman's employer.

To Serve Them All My Days : Adapted by the novel of the same name written by R. F. Delderfield , this series look at David Powlett-Jones, an embittered young soldier who after the First World War, who takes a teaching post at Bamfylde, an elite boarding school in the uplands of West Devon.

Tudors : The *Tudors* focuses on the life and romances of the young King Henry VIII. Henry's struggle with the Pope over his divorce, as well as the creation of the Church of England.

Vicar of Dibley : *The Vicar of Dibley* is set in a fictional small Oxfordshire village called Dibley, which is assigned a female vicar following the 1992 changes in the Church of England that permitted the ordination of women.

Victoria and Albert : *Victoria & Albert* focuses on the early life and marriage of Queen Victoria and Prince Albert. The series starred Victoria Hamilton as Victoria, Jonathan Firth as Prince Albert and Peter Ustinov as King William IV and was directed by John Erman.

Wallis & Edward : that dramatises the events leading to the 1936 abdication of King Edward VIII of the United Kingdom, who gave up his throne to marry the twice-divorced American Wallis Simpson. This series looks at the events from Simpson's perspective.

Warrior Queen : The tale of the fearsome Queen Boudica, who took on the most powerful army on earth, bursts into life as a story of love, treachery, and unquenchable thirst for revenge.

Wish Me Luck : *Wish Me Luck* is a television drama about the exploits of British women agents during World War II. Filmed on location in England and France, the series focuses on the female resistance fighters as work behind enemy lines.

Wives and Daughters (Adaptation Elizabeth Gaskell) : Misguided stepmothers, romantic betrayals, secret marriages--these are not just the makings of modern soap operas; this is what makes the BBC's delightful four-episode miniseries *Wives and Daughters* come to life.

Women of Substance: Emma Harte, formerly a poor Yorkshire servant, becomes one of the wealthiest and most successful retailing magnates in the world.

Mystery

A Perfect Spy : *A Perfect Spy* is a BBC miniseries adaptation of John le Carré's spy novel of the same name. It follows the career of the British MI6 spy Magnus Pym from his early days as a schoolboy to his eventual disappearance as a suspected agent of the Czech secret service.

Agatha Christie's Poirot : Hercule Poirot is a fictional Belgian detective created by Agatha Christie. He is one of Christie's most famous and long-lived characters, appearing in 33 novels and 51 short stories that were published between 1920 and 1975 and set in the same era.

Life on Mars : NYPD detective Sam Tyler finds himself hurtled back in time to 1973 after being struck by a car in 2005.

Miss Marple series : Miss Marple was a long-running and popular British television series based on the Miss Marple murder mystery novels by Agatha Christie. Jane Marple is an elderly spinster living in the village of St. Mary Mead and works on various mysteries.

Father Brown (Adaptation) : *Father Brown* is a fictional character created by English novelist G. K. Chesterton, who uses intuition rather than deduction to solve various mysteries. He is often assisted by the reformed criminal Flambeau and relies on his experience as a priest and confessor to reach a conclusion.

Inspector Lewis : This detective drama spin-off from the Inspector Morse series has the former Detective Sergeant promoted to Inspector and still working in Oxford. Based on the crime novels by Colin Dexter, Inspector Lewis is played by Kevin Whately.

Inspector Lynley : The *Inspector Lynley Mysteries* is a series about Detective Inspector Thomas "Tommy" Lynley, 8th Earl of Asherton (Nathaniel Parker) of Scotland Yard and Detective Sergeant Barbara Havers (Sharon Small). In addition to the tensions involved in solving murder cases, the series thrives on the characters' clashes regarding personality, gender, and class.

Inspector Morse : Morse (played by the late John Thaw) is not the ideal policeman, his superiors think. He is prickly and sarcastic, a bachelor, an Oxford graduate, an intellectual snob, and he doesn't always follow protocol strictly as he should. But he gets results.

Jonathan Creek: Jonathan makes a living inventing magic tricks for a famous illusionist and helps investigative journalist Maddie solve crimes in his spare time.

Last Detective : Detective DC Davies works the streets of Willesden with heart and some self doubts. The show relates his interactions with his sidekick Mod, his tough boss Yardley and his struggles with a marriage gone wrong.

Midsomer Murders : *Midsomer Murders* is a British television detective drama that focuses on the main character of Detective Chief Inspector Tom Barnaby, played by John Nettles, and his efforts to solve the various crimes that take place in the fictional English county of Midsomer. It is based on a series of crime novels by the author Caroline Graham and was originally adapted by Anthony Horowitz.

Murder Must Advertise : based on Dorothy L. Sayer's mystery featuring, Lord Peter Wimsey. Lord Wimsey takes up employment as a copywriter for an advertising agency in order to discover more about the recent mysterious death of one of the employees.



Prime Suspect : Lynda La Plante's novels are the basis for this is a long-running occasional detective drama series starring Helen Mirren as DCI (later Detective Superintendent) Jane Tennison, a flawed but sympathetic heroine who adopts a cutting persona to deal with her grueling job and uncertain relationships.

Rebus (Scotland) : *Rebus* is the title of the detective drama based on the Inspector Rebus novels by the Scottish author Ian Rankin set in and around Edinburgh. Rebus not only struggles with internal police politics, a struggle exacerbated by his tendency to bend the rules and ignore his superiors, but must also deal with his own personal demons.

Rumpole of the Bailey : *Rumpole of the Bailey* was a British television series created and written by the late British writer and barrister John Mortimer, QC which starred Leo McKern as Horace Rumpole, an aging London barrister who defends any and all clients.

Ruth Rendell Mysteries : This psychological mystery series is based on the novels and short stories of Ruth Rendell.

Taste for Death (Adaptation P.D. James) : A six-part presentation of "Mystery!" featuring Scotland Yard's new commander of the Sensitive Crimes Squad, Adam Dalgliesh. The inspector investigates the bizarre death of one of his personal friends, who had been threatened by a series of poison-pen letters.

Touch of Frost : *A Touch of Frost* is a detective television starring Sir David Jason as Detective Inspector William Edward Frost, GC. He is experienced and dedicated to his work, but tends to clash with his superiors, mainly represented in the series by Superintendent Norman "Horn-rimmed Harry" Mullett, played by Bruce Alexander.

Waking the Dead: A police procedural crime drama series produced by the BBC featuring a fictional Cold Case Unit comprising CID police officers, a psychological profiler and a forensic scientist.

Wallander: This series is adapted from the Swedish novelist Henning Mankell's Kurt Wallander novels and starring Kenneth Branagh as the eponymous police inspector. Emmy-award-winning director Philip Martin is the lead director.

[Wire in the Blood \(Adaptation Val McDermid\)](#) : Based on characters in the novels by Val McDermid, *Wire in the Blood* centres around Dr. Tony Hill, a clinical psychologist who is able to tap into his own dark side to get inside the heads of serial killers.

Reality TV

[1900 House](#) : *1900 House* is a historical reality television programme whose premise is transplanting a twenty-first century family back in time to the 1900s and trying to live in the way of the late Victorians for three months in a modified house.

[1940s House](#) : Assembled by the same team responsible for the reality series *1900 House* and *Frontier House*, this three-episode series has a family living under the same conditions endured by their countrymen during the WWII years (1939-1945). Three generations of the family are crowded into an old-fashioned London flat, where they must endure such deprivations as food rationing and air-raid blackouts, as well as conduct their lives within the moral and cultural parameters of the early '40s.

[Frontier House](#): (US location) : An educational reality TV series that originally aired on PBS in April 2002 was filmed over the course of five months and followed the lives of three family groups that agreed to live as homesteaders did on the American frontier in 1883.

[Manor House](#): The six-part *Manor House* was filmed at Manderston, a 109-room mansion in Scotland. For a period of three months, participants assumed the roles of the masters and servants, their behaviour rigidly controlled by a rule book articulating the manners and mores of the Edwardian era.

[Regency House Party](#) : *Regency House Party* gives ten men and women an opportunity to go back to the England of the early 1800s and live in the age of romance on a country estate. For nine weeks, ten singles live as they would have 200 years ago following strict rules of courtship, will they find love?

[Texas Ranch House](#) : From the producers of *Colonial House*, this eight-part PBS miniseries took a suburban Californian family and transplanted them to a copy of a "typical" Texas cattle ranch, circa 1867. The family and "help" will need to round up the heads of cattle and send the beasts to auction to keep the ranch running.

[Up Series](#): The *Up Series* is a run of documentary films that have followed the lives of fourteen British children since 1964, when they were seven years old. Every seven years, the director, Michael Apted, films new material from as many of the original fourteen as he can get to participate.